

Llywodraeth Cynullad Cymru
Welsh Assembly Government

www.cymru.gov.uk

NHS Wales

Future Challenges

Future Opportunities

Paul Williams | 18 November 2010



Our distinctive approach to public services

“Improvement is enabled through collaboration, integration and innovation across sectoral and geographical boundaries.

This is our alternative to public services driven by the market and competition between service providers.”

“Wales - A Real Community”, First Minister, Carwyn Jones

Our distinctive approach to public services

“ We committed to:

- Putting people first;
- Working together collaboratively to deliver better services;
- Developing a world class workforce;
- Securing better value for the Welsh Pound; and to
- Relentlessly driving change.”

***First Minister for Wales – Wales a real country – 2nd
November 2010***

“ Central organising principle”

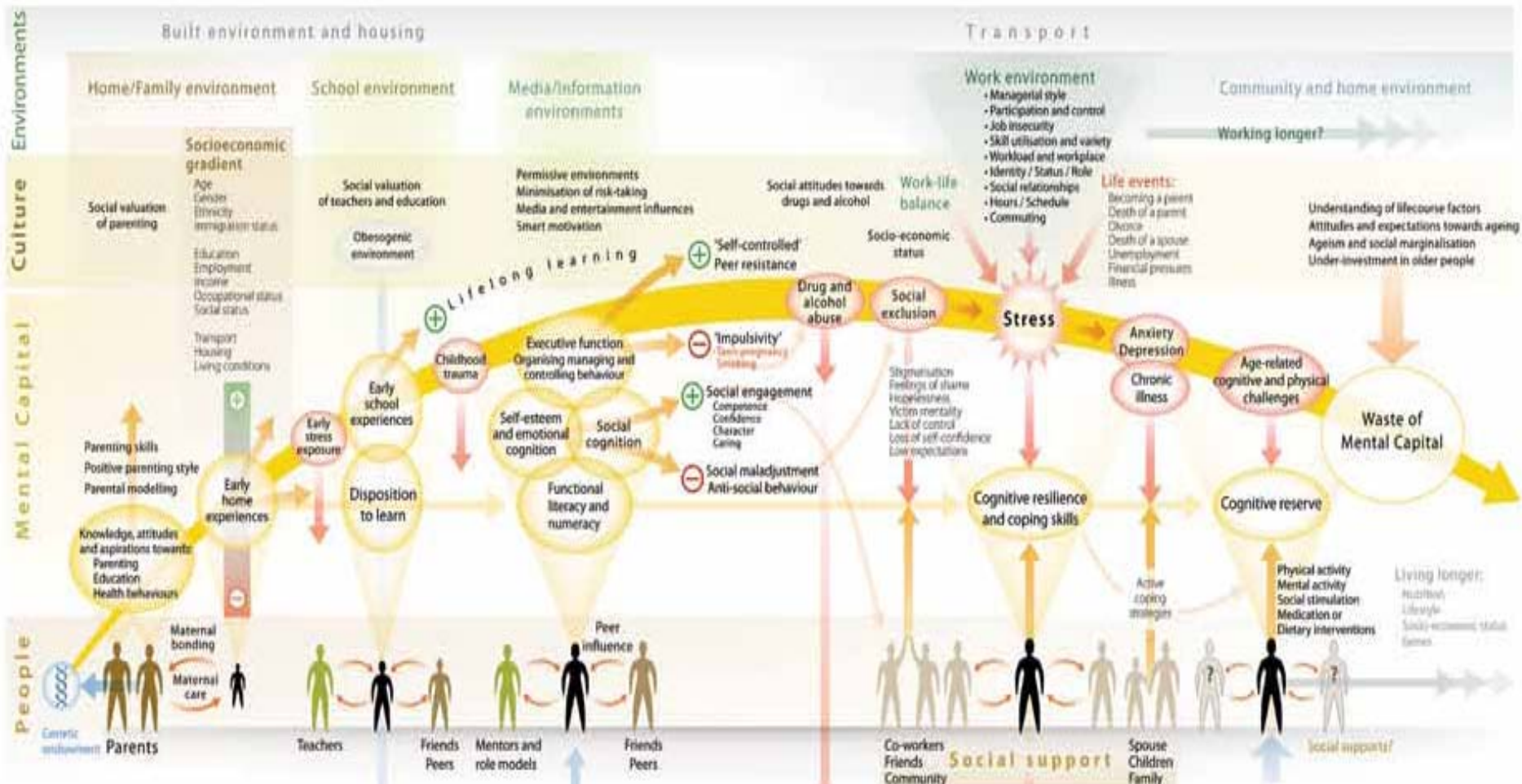
Sustainable development will be the central organising principle of the Welsh Assembly Government.

One Wales, One Planet.

Sustainability is more than being eco-friendly

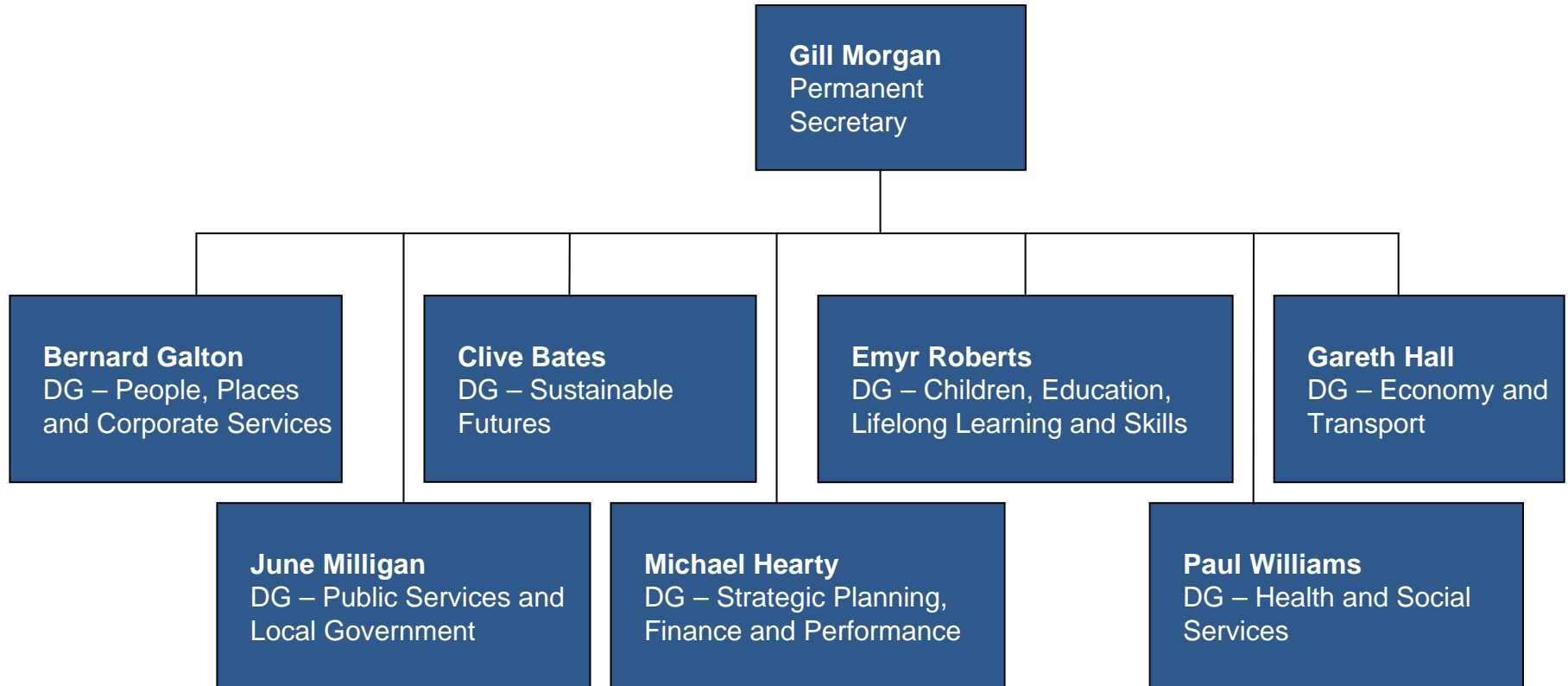
Sustainable development means enhancing the economic, social and environmental well being of people and communities, achieving a better quality of life now and future generations.

Wellbeing maximised across generations and through life-courses



Welsh Assembly Government

Top Team Management



NHS Wales Reform

A Five Year Journey – A Coherent Response:

Structural

- Reduced number of organisations;
- Integrated organisations – Primary, Community, Specialised and Tertiary;
- Central Role for Public Health.

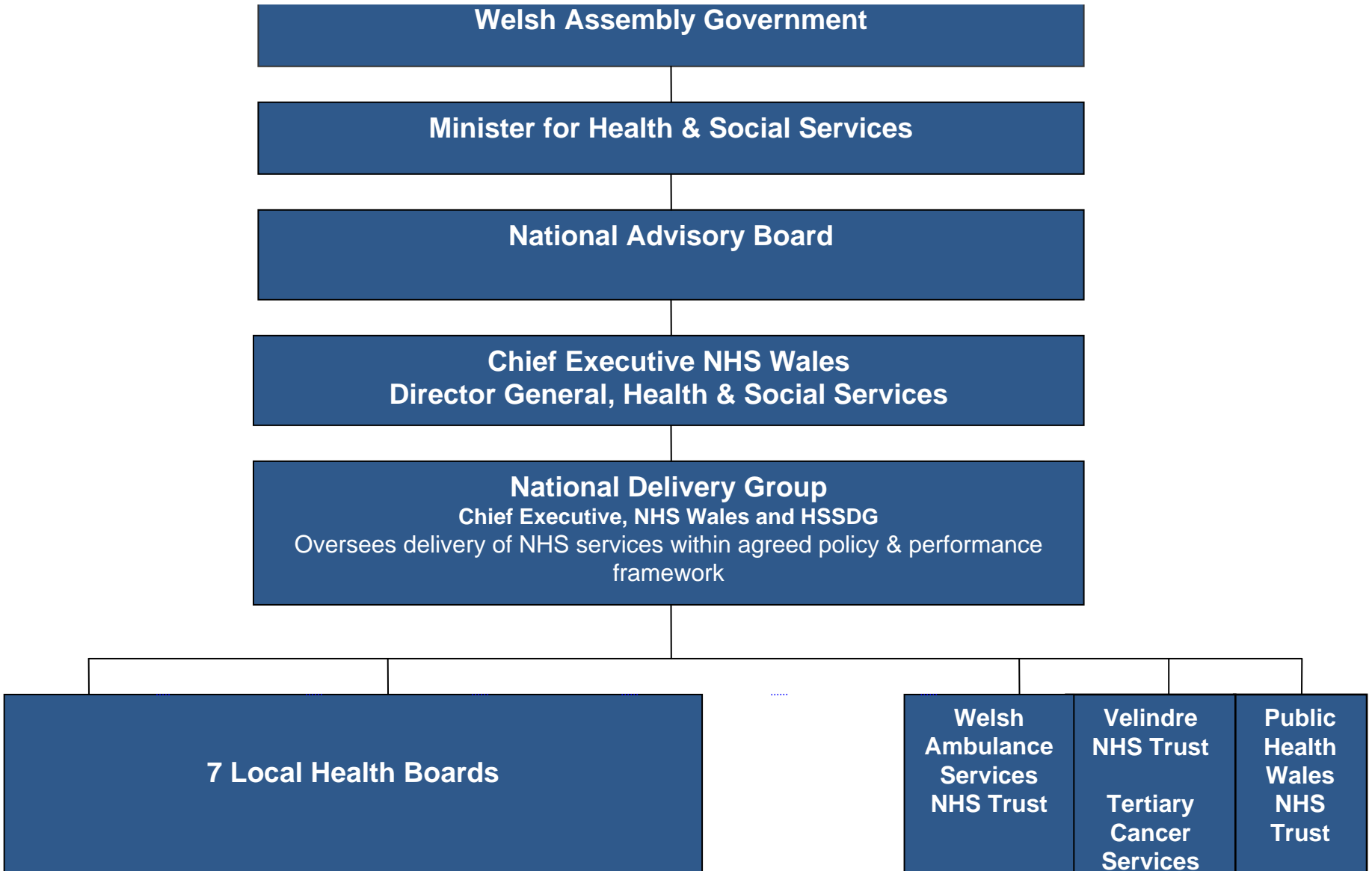
Supporting policies that shift the balance of care

- Chronic Conditions Management;
- Primary and Community Care Strategy;
- Rural Health Plan;
- ICT Strategy;
- Systems Thinking.

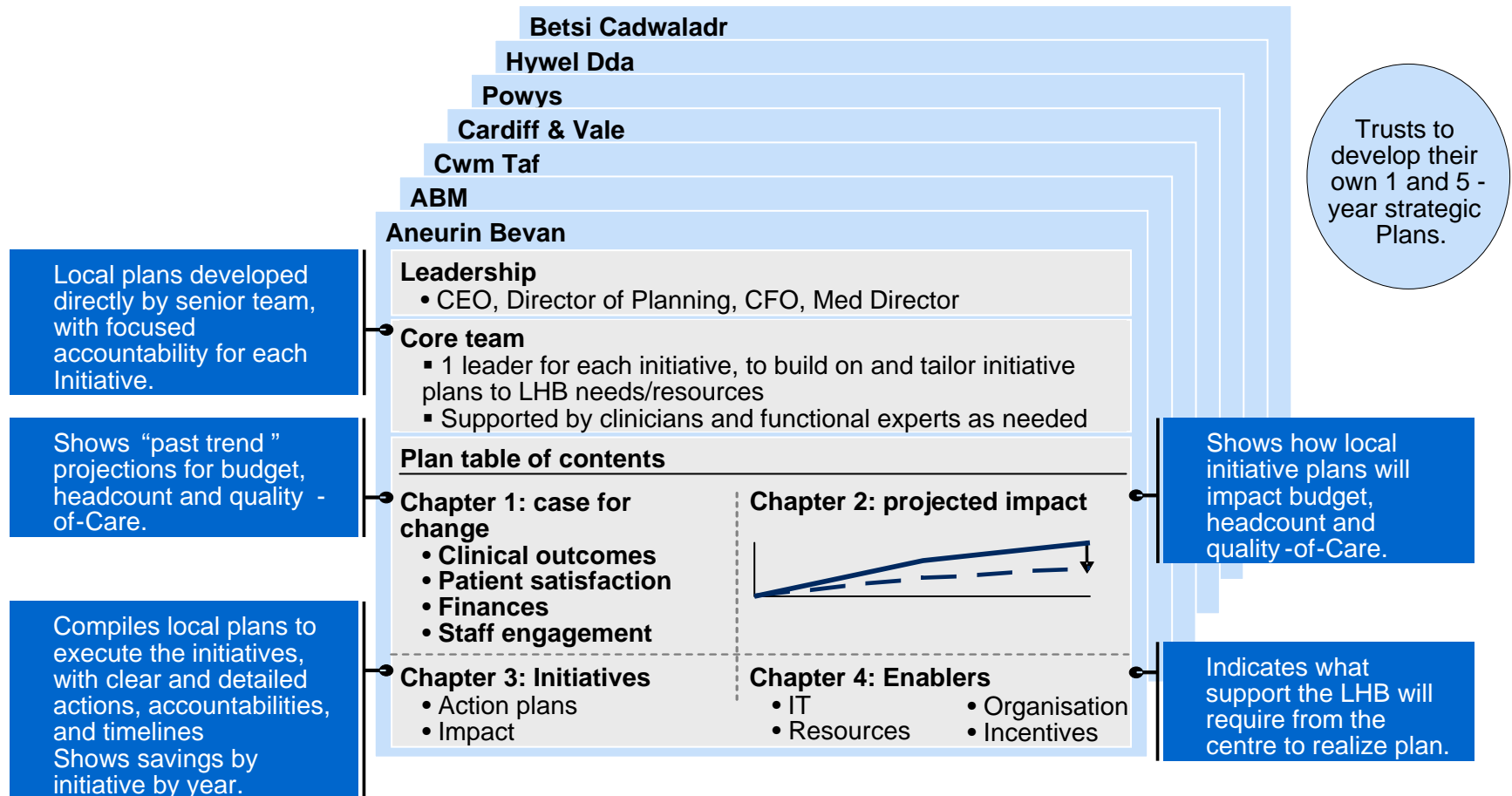
Implementation: A 5-Year Service, Workforce & Financial Strategic Framework

- Step change in financial control and performance management;
- Transform services to deliver integrated care;
- Clinical engagement and staff empowerment;
- Maximise partnership working and opportunities.

Post NHS Reform Structure



Each LHBs develops, and is accountable for implementing, its own 1 year and 5 year plans



Joined up Government



Close the gap with secondary care

- Enhanced prevention;
- Early identification of risk factors;
- Roll out of integrated health & social care teams;
- Implementation of Chronic Conditions Management Model;
- Development of Unscheduled Care Pathway.

Progress so far

- All Local Health Boards have identified locality clusters/community networks;
- GPs engagement in new management arrangements;
- Community Resource Teams being established;
- Communication Hubs on track for 2011;
- Joint Locality Directors with Local Government;
- Trial Primary Resource Centres:
 - Cardiff;
 - Merthyr.

Use the contract

- Specific admission avoidance schemes;
- Supportive discharge schemes;
- Chronic Conditions Management;
- Enhanced preparation for scheduled care;
- Medicines Management;
- Advanced access to diagnostics;
- Active Rehabilitation;
- Encourage Management Input.

Joined up Government

Sustainability

The Welsh Way – A modern Welsh Government in touch with its people and its public service heritage

Reform Principles

Developed through:

- Making the Connections
- Beyond Boundaries
- Delivering Beyond Boundaries
- Better Outcomes for Tougher Times



CITIZEN

WORKFORCE

COLLABORATION

**VALUE FOR
THE WELSH
POUND**

**REDUCING
BUREAUCRACY**

**GEOGRAPHY
/ PLACE**

The building blocks of a distinctive **Welsh Public Service**

- Education - Frontline Resources Review
- Social Services - Social Services Commission
- NHS Wales - NHS Wales' 5 year Service, Workforce and Financial Strategic Framework
- Local Government - What's Best Delivered Where
- Environmental - Review of AGSBs
- Corporate – Managing with Less



Outcomes narrative

- Improved attainment in schools
- Independent living for the elderly
- Reduced health inequalities
- Services delivered at the right level in the right place
- Reduced administrative overhead

Efficiency & Innovation underpinning

- Collaborative procurement and commissioning
- National asset management
- Public service ICT
- Workforce development
- Leadership
- Transforming the business
- New models of service delivery

