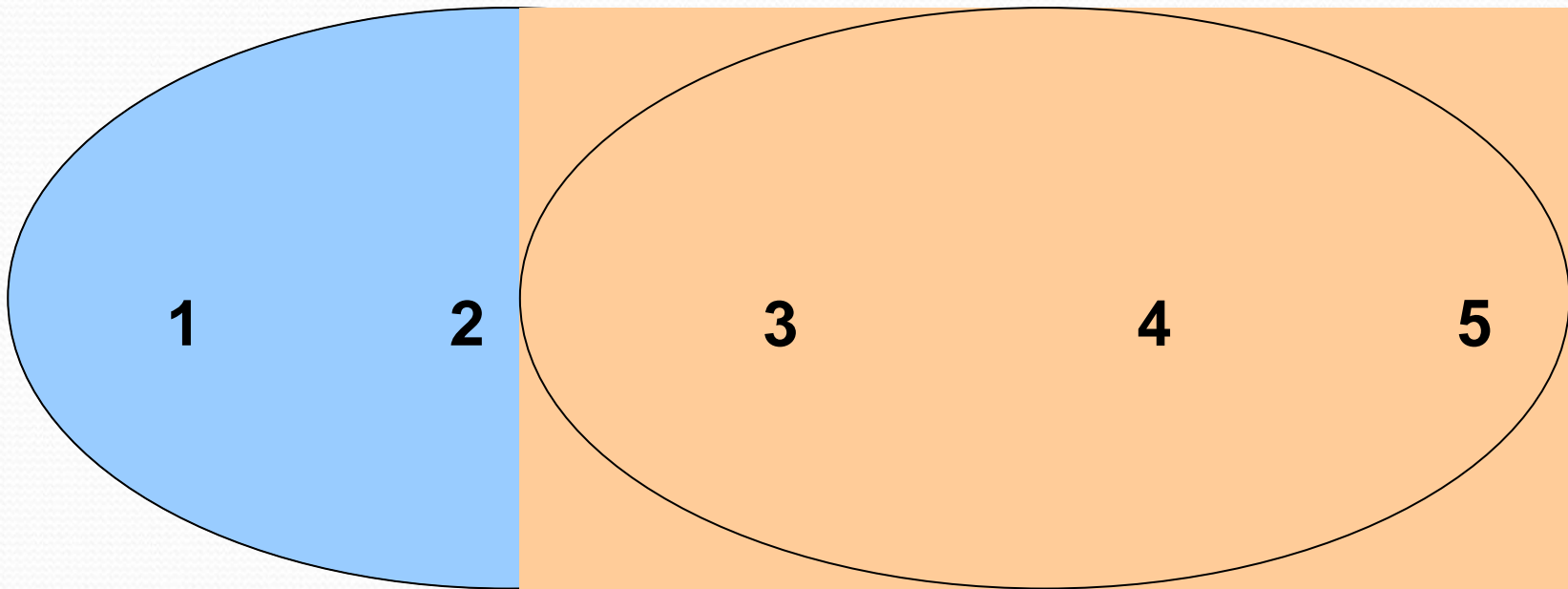


Developing and Improving Services

Quality improvement and cost reduction

QUALITY INITIATIVES
NEW DEVELOPMENTS

COST REDUCTION PROGRAMMES
EFFICIENCY SAVINGS



Costs more

Cost neutral

**Improves quality
& reduces costs**

Quality neutral

Reduces
quality

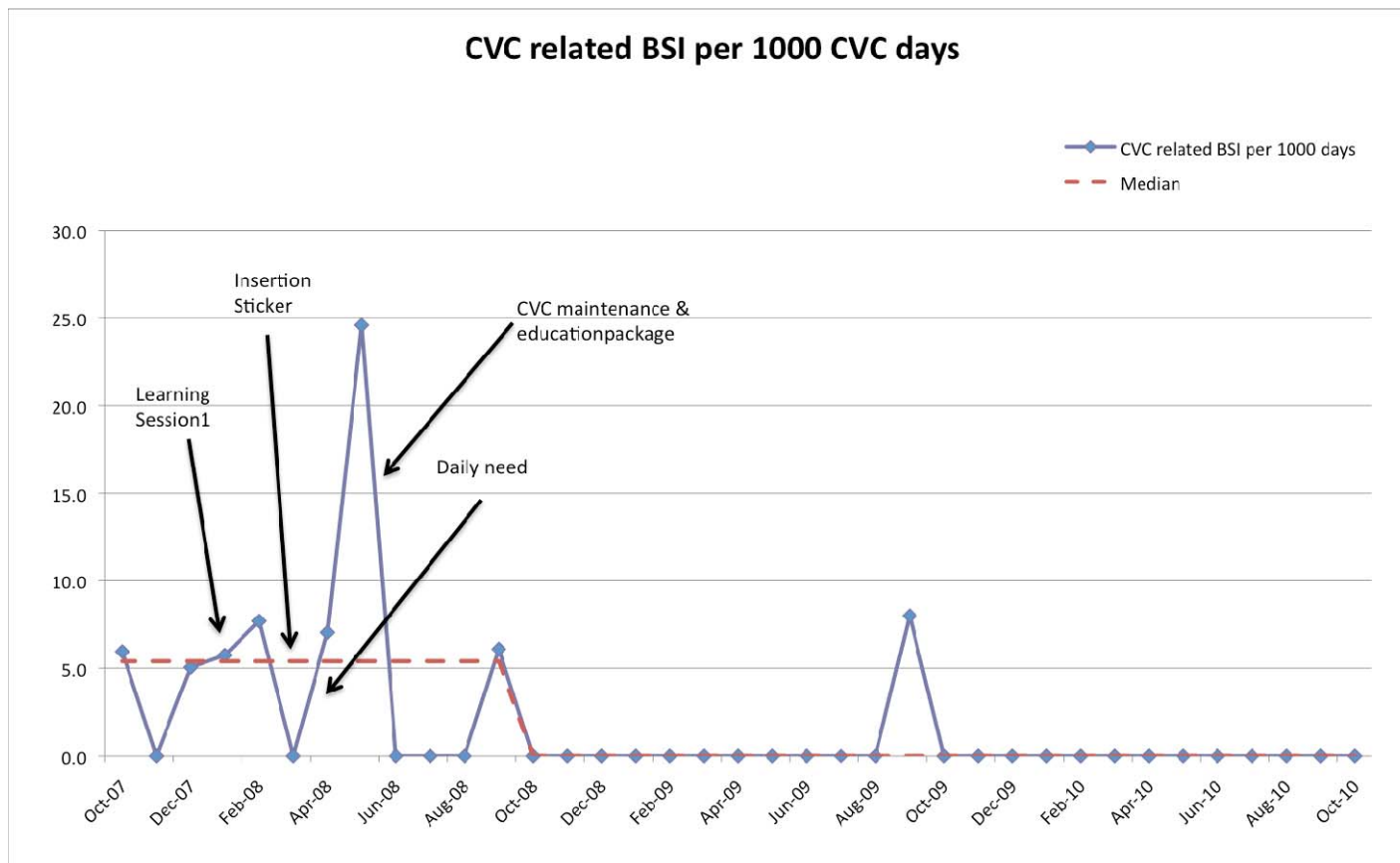
The Healthcare Quality Strategy for Scotland

Person-Centred - Mutually beneficial partnerships between patients, their families, and those delivering healthcare services which respect individual needs and values, and which demonstrate compassion, continuity, clear communication, and shared decision making.

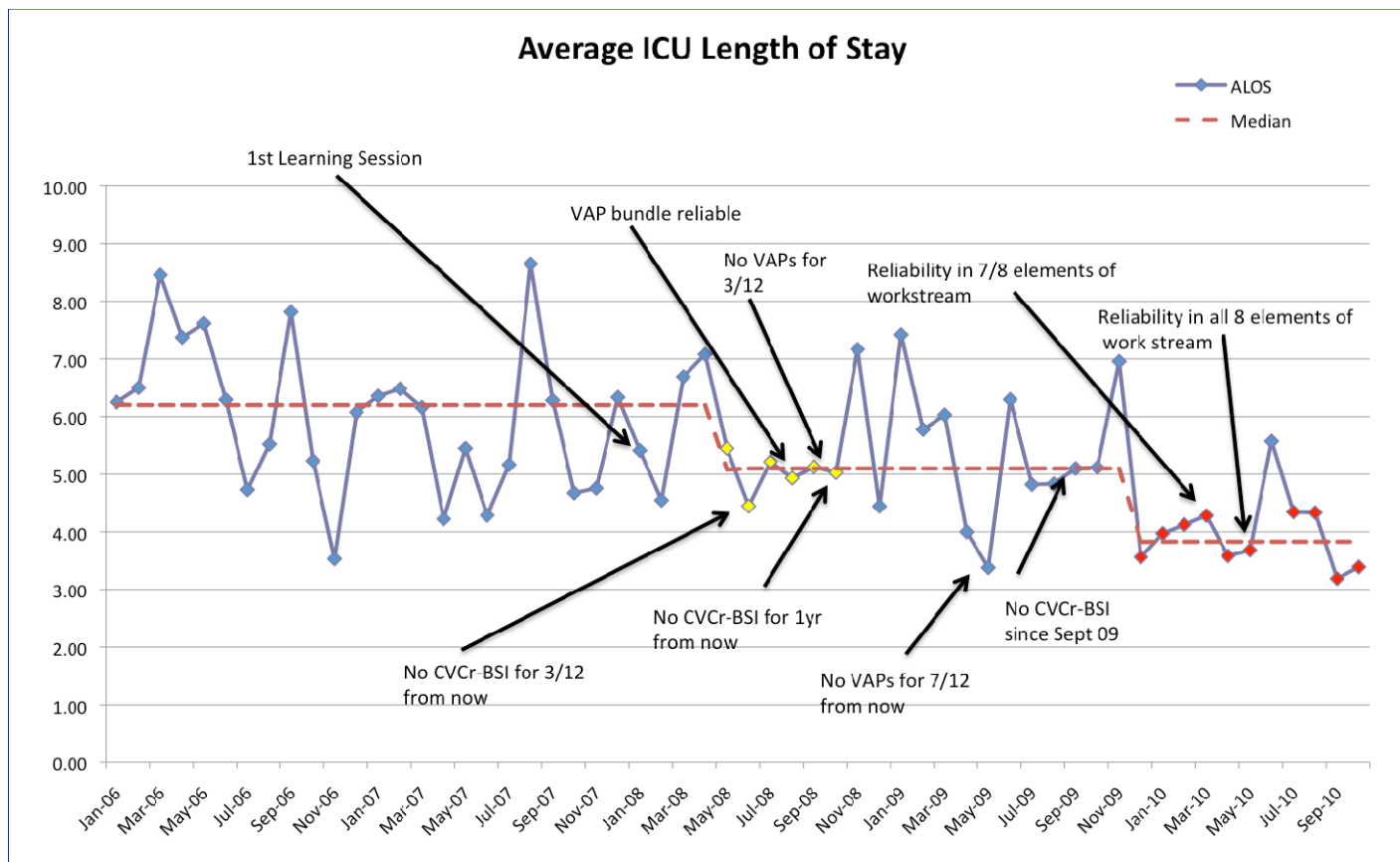
Clinically Effective - The most appropriate treatments, interventions, support, and services will be provided at the right time to everyone who will benefit, and wasteful or harmful variation will be eradicated.

Safe - There will be no avoidable injury or harm to patients from healthcare they receive, and an appropriate clean and safe environment will be provided for the delivery of healthcare services at all times.

Hospital Acquired Infection 1



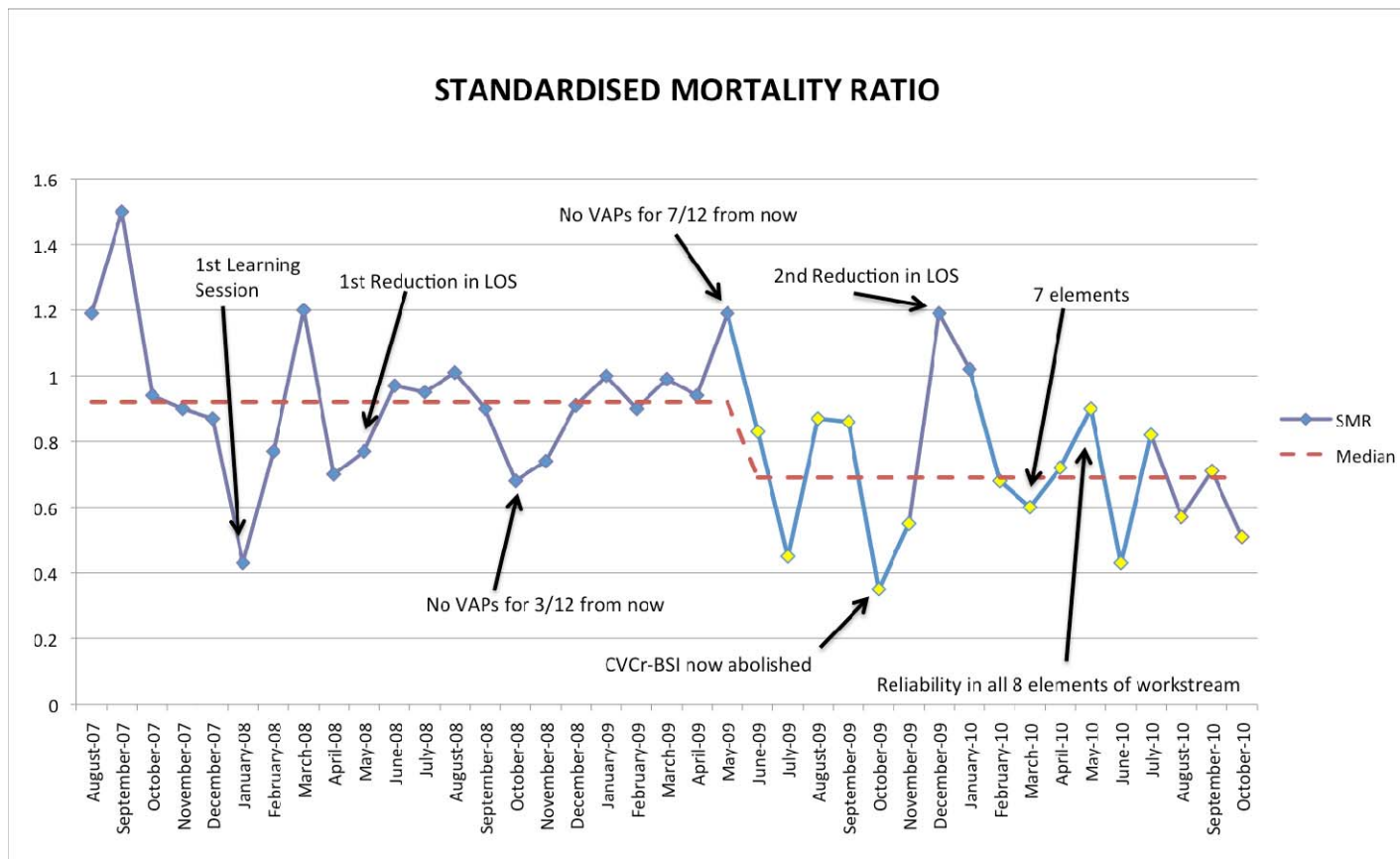
2.4 day reduction in ALOS



What does a 2.4 day reduction mean?

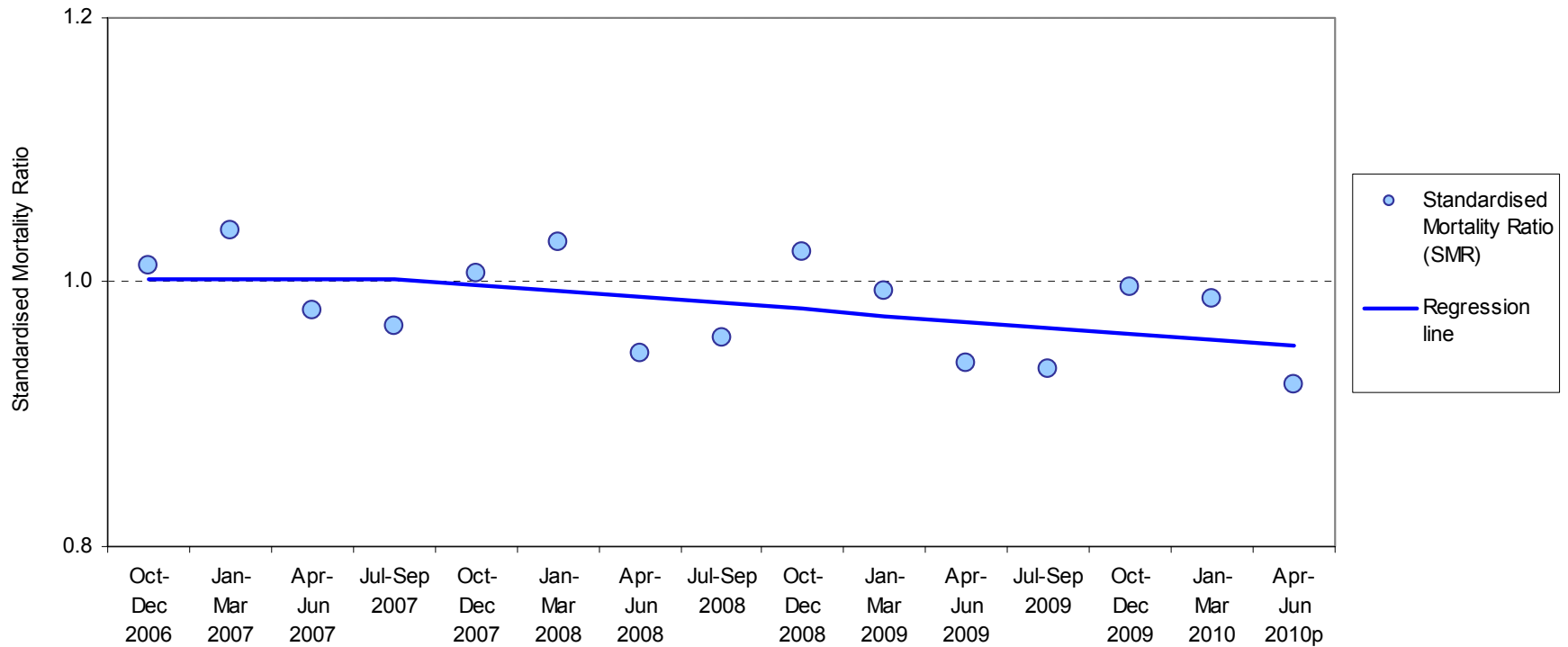
- 1 day in ICU costs £1,600.00 per day
- 380 admissions last year
- Cost saving = 380 x 2.4 x £1,600.00
= **£1,459,200.00**

0.23 reduction in SMR



Quarterly Hospital Standardised Mortality Ratios in Scotland

Figure 3 - Standardised Mortality Ratio with regression line; October 2006 - June 2010



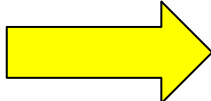
Source: ISD Scotland (SMR01) linked dataset

HSMR



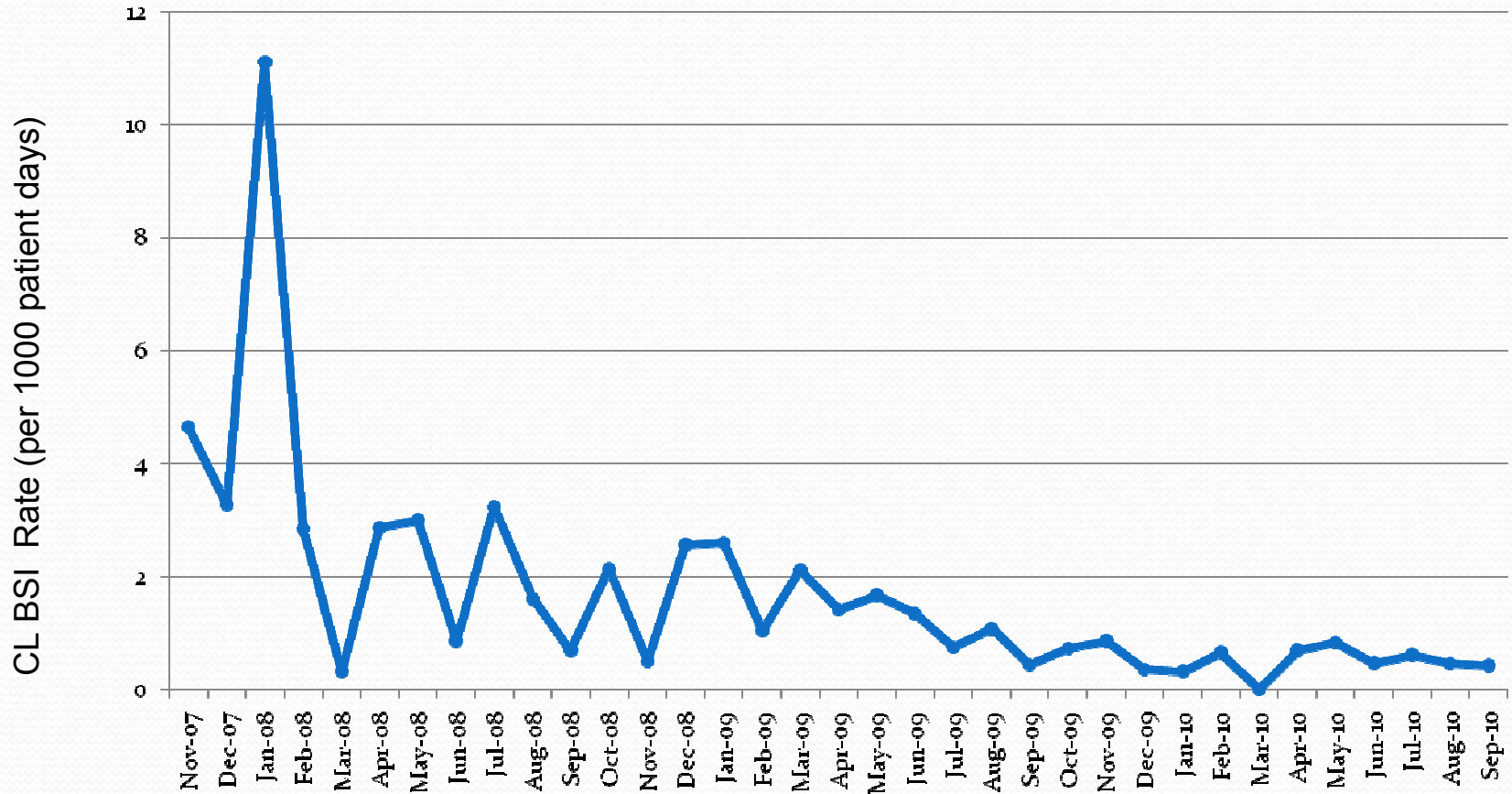
5% reduction
0.5% per quarter

How ?

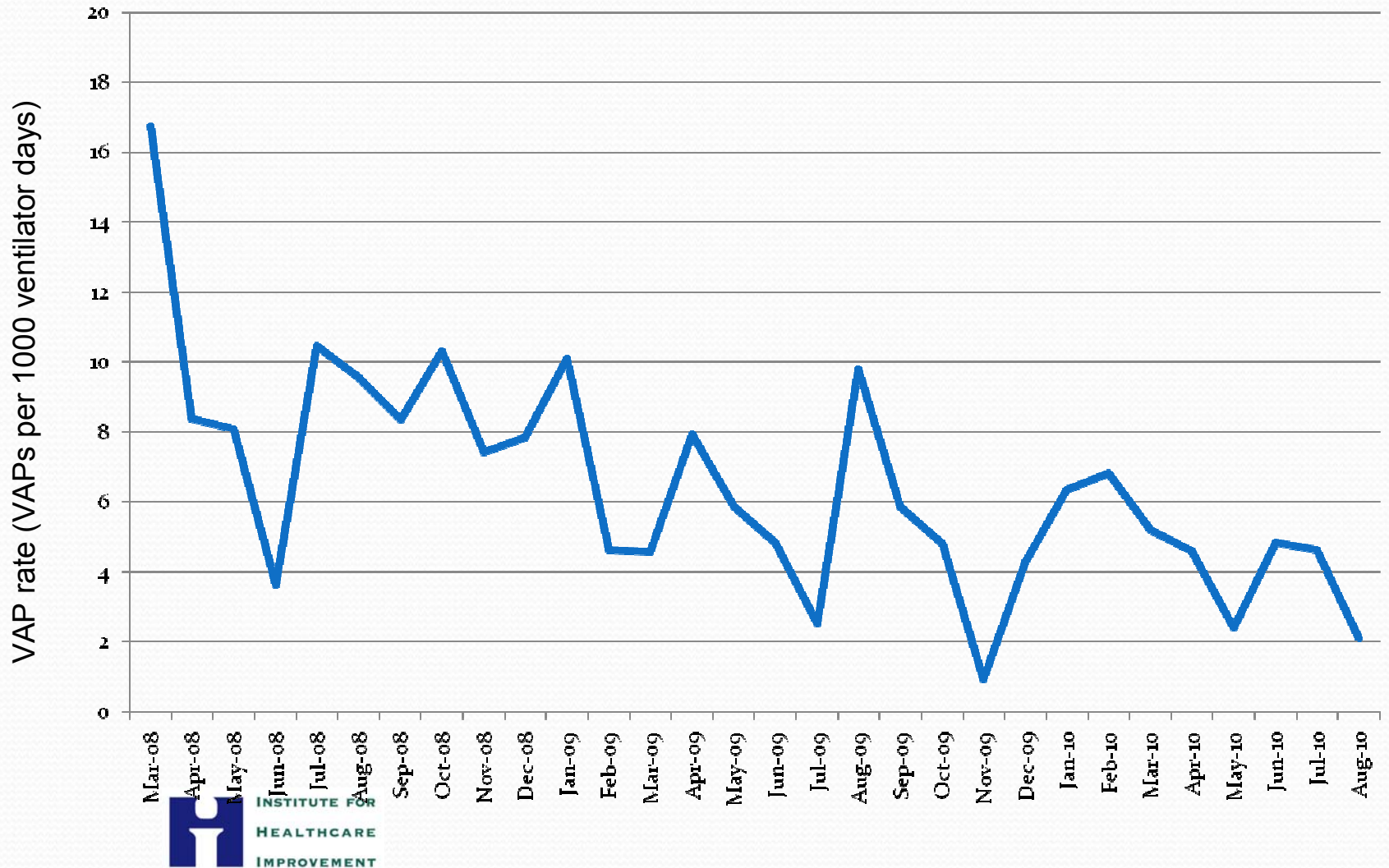
- SPSP ✓
- Work stream reliability ✓
- Multidisciplinary ✓ 
- Checklists ✓
- Person-centred ✓
- HEI / Infection Control ✓
- Reduction in waste
- Reduction in harm
- Reduction in variation

Critical Care Central Line Blood Stream Infection Rate

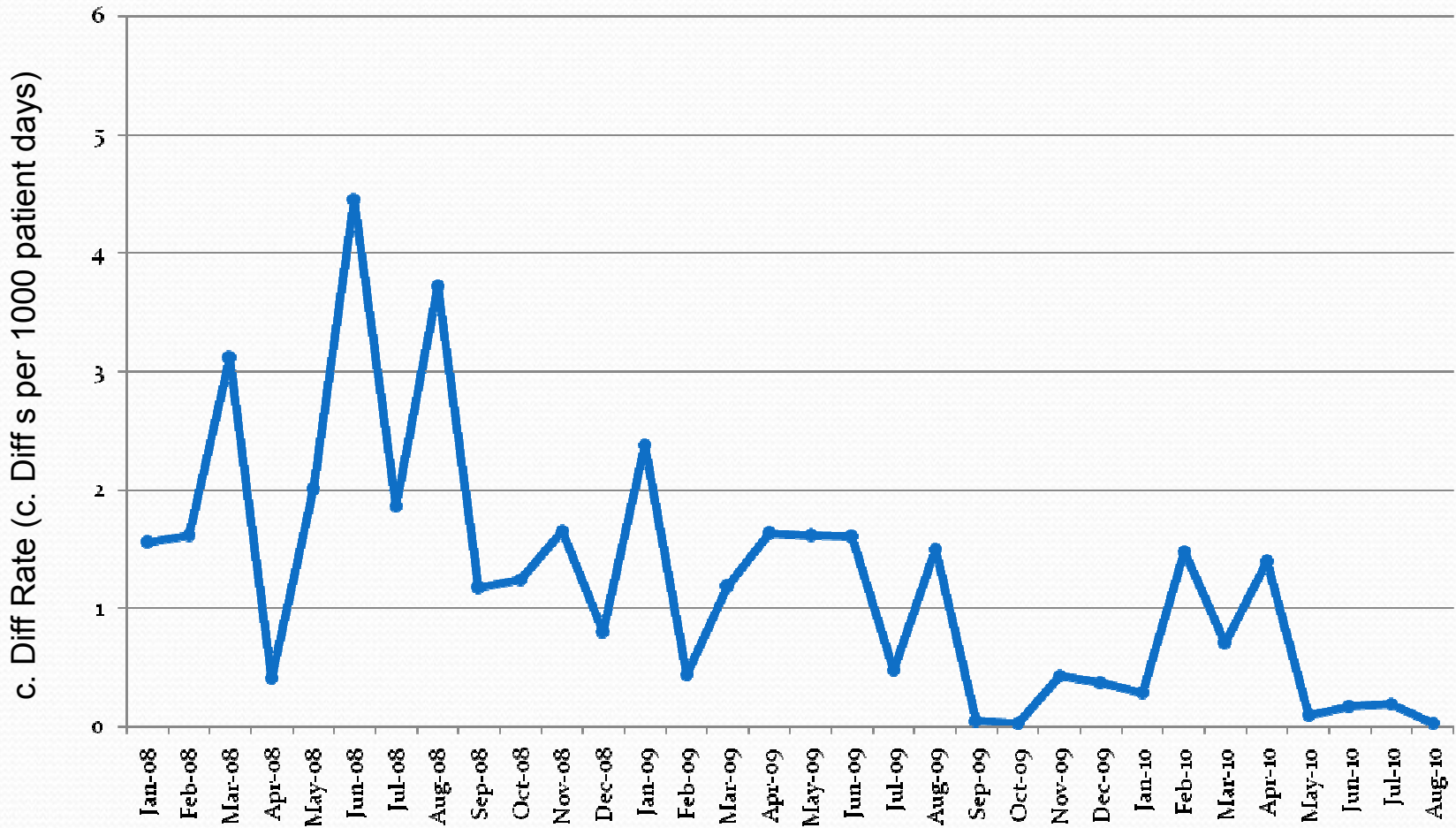
November 2007 through September 2010



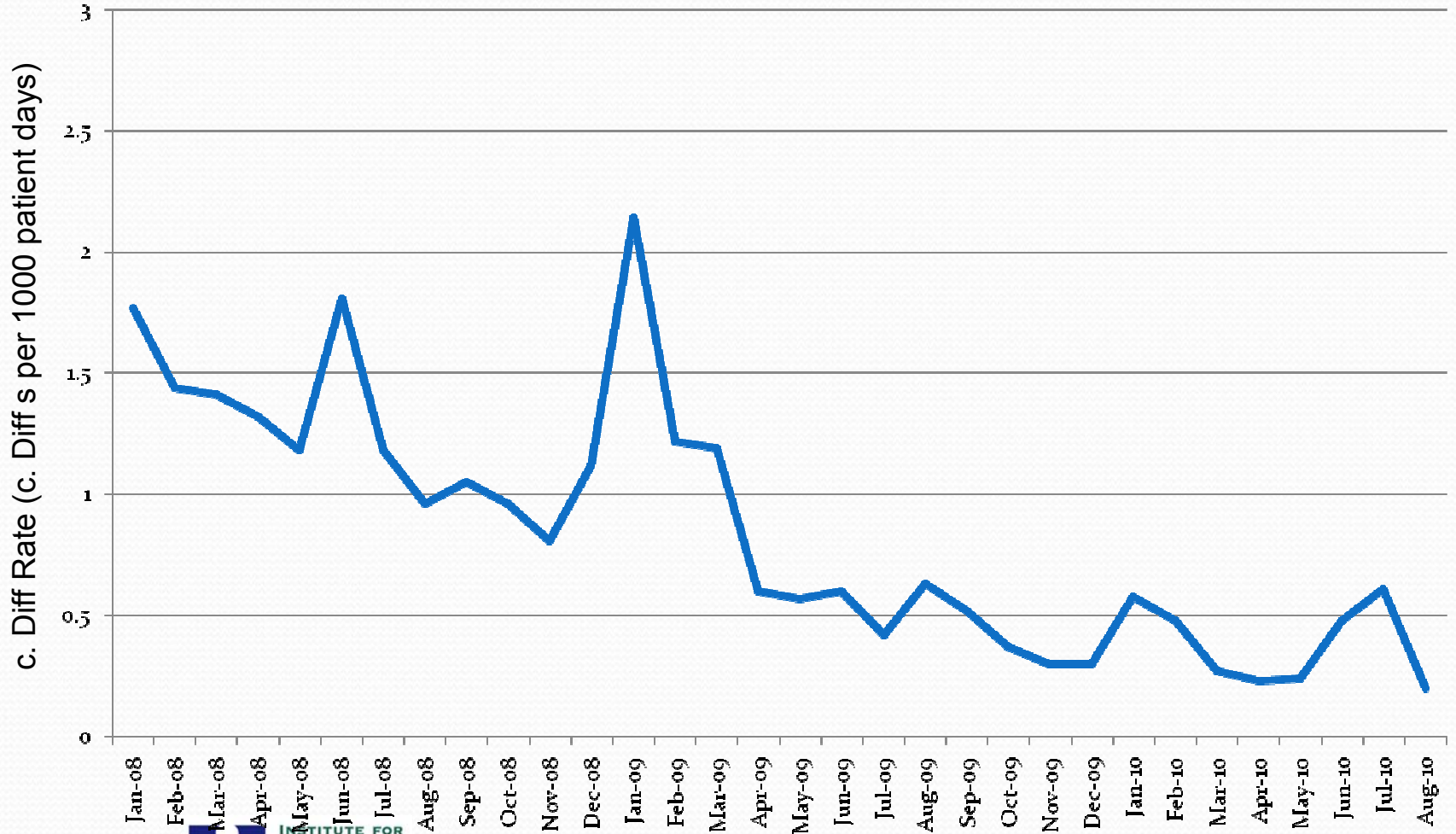
VAP Rate, March 2008 through August 2010



Critical Care C. Diff Rate January 2008 through August 2010

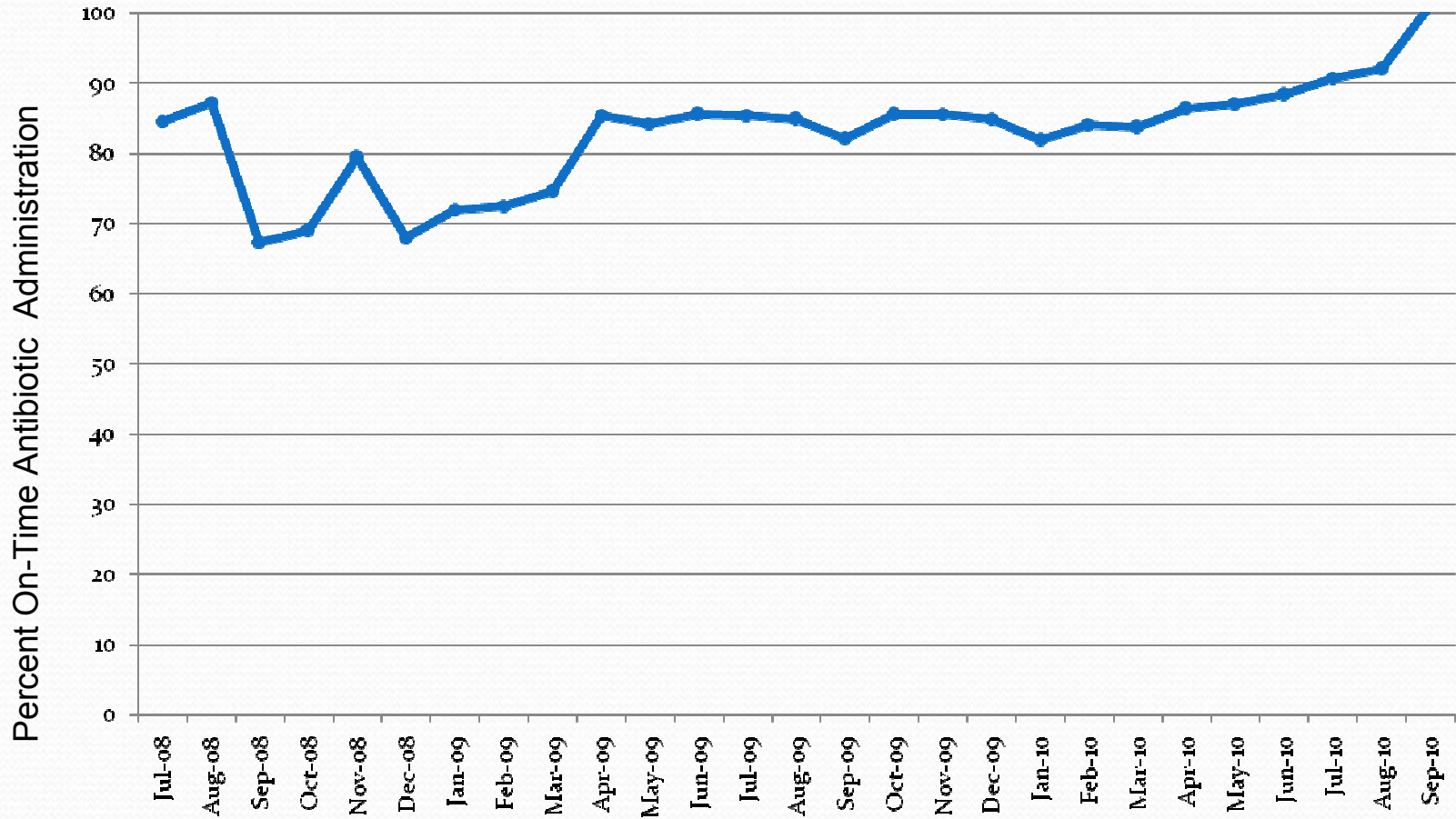


General Ward C. Diff Rate, January 2008 through August 2010



Peri-operative Care Percent On-Time Antibiotics

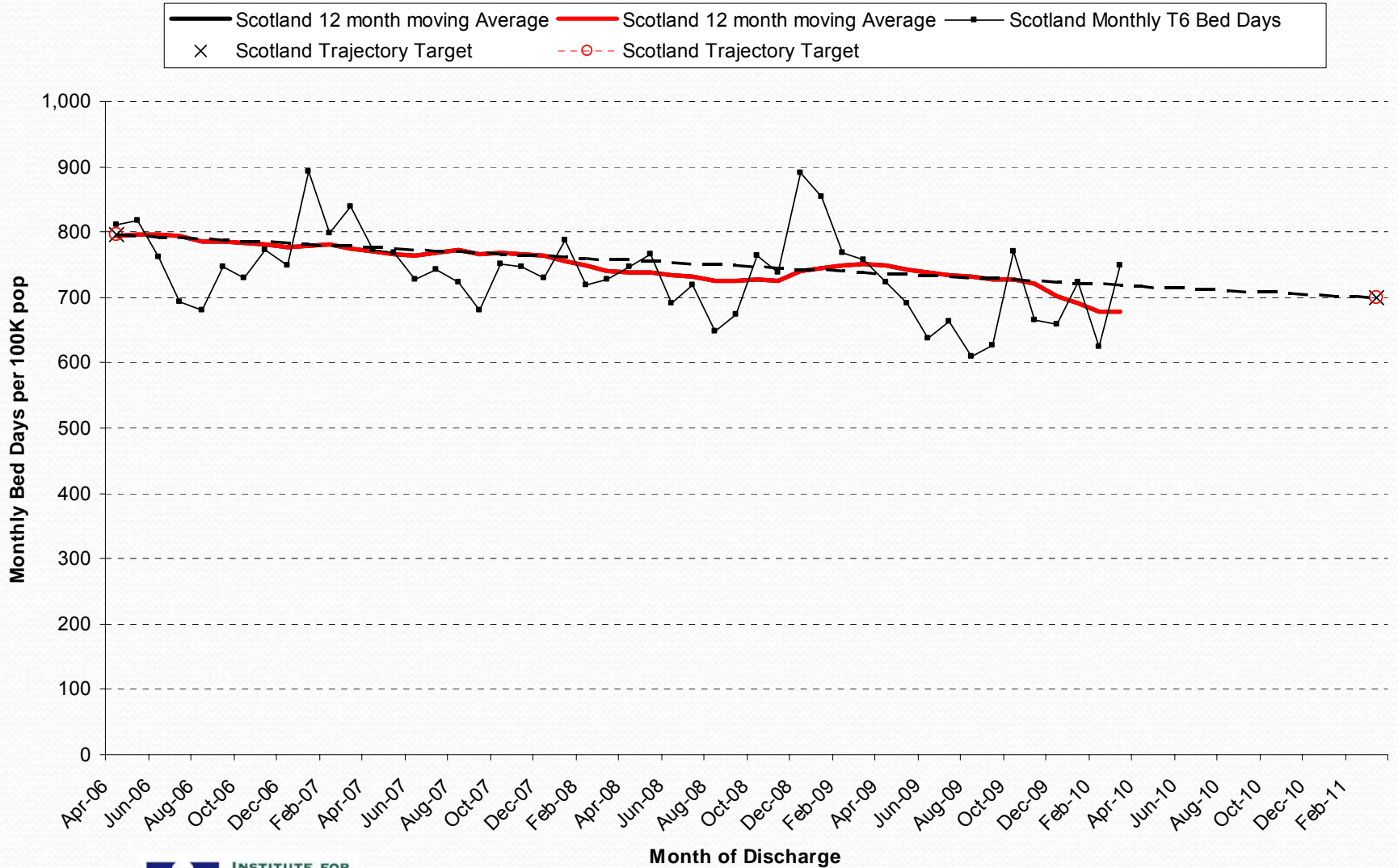
July 2008 through September 2010



Long Term Conditions – Whole System Challenge

- **60% of inpatient bed days**
- **70% of emergency admissions**
- **80% of GP consultations**
- **80% of prescribed medicines**
- **Home care, equipment and housing needs**
- **Carer support issues**
- **Long term care and support needs**

Bed Days per 100,000 population for T6 Long Term Conditions Monthly Trend



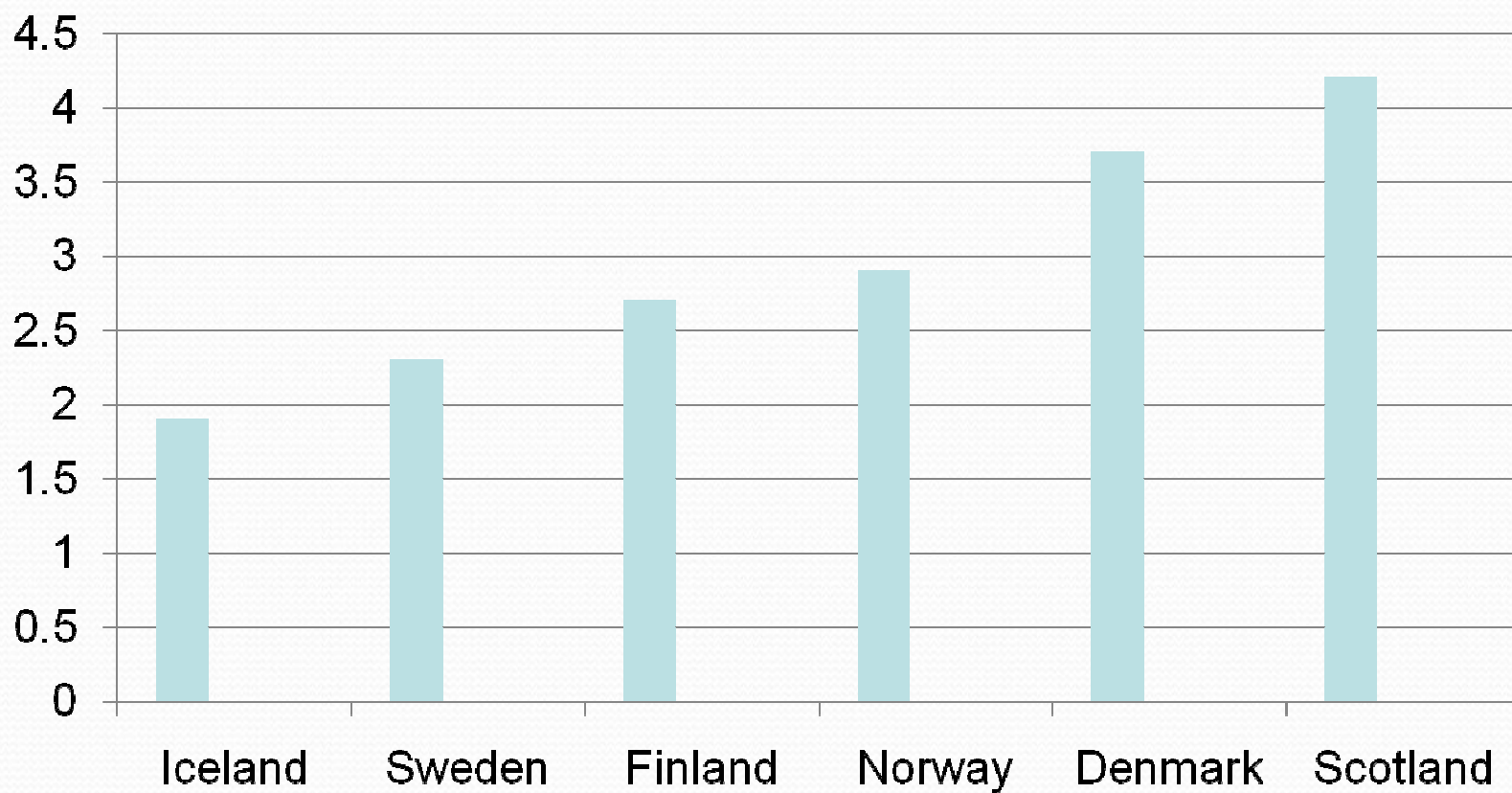
Evaluating Impact

NHS Forth Valley

- 2269 patients have an Anticipatory Care Plan
- GP and Out of Hours consultation rate ↓
- 15% ↓ in A&E attendances
- 40% ↓ emergency admission episodes
- 39% ↓ bed days
- 50% ↓ admissions from care homes

Similar results in Lothian / Lanarkshire/ Highland

Infant mortality rates – Scandinavia and Scotland





Does he mean us?

“NHS Scotland has undertaken a bold, comprehensive, and scientifically grounded programme to improve patient safety. The dedication of NHS leadership at all levels to this endeavor is apparent to me, and bodes well for success. **In its scale and ambition, the Scottish Patient Safety Programme marks Scotland as leader – second to no nation on earth – in its commitment to reducing harm to patients dramatically and continually.**”

Don Berwick June 2008